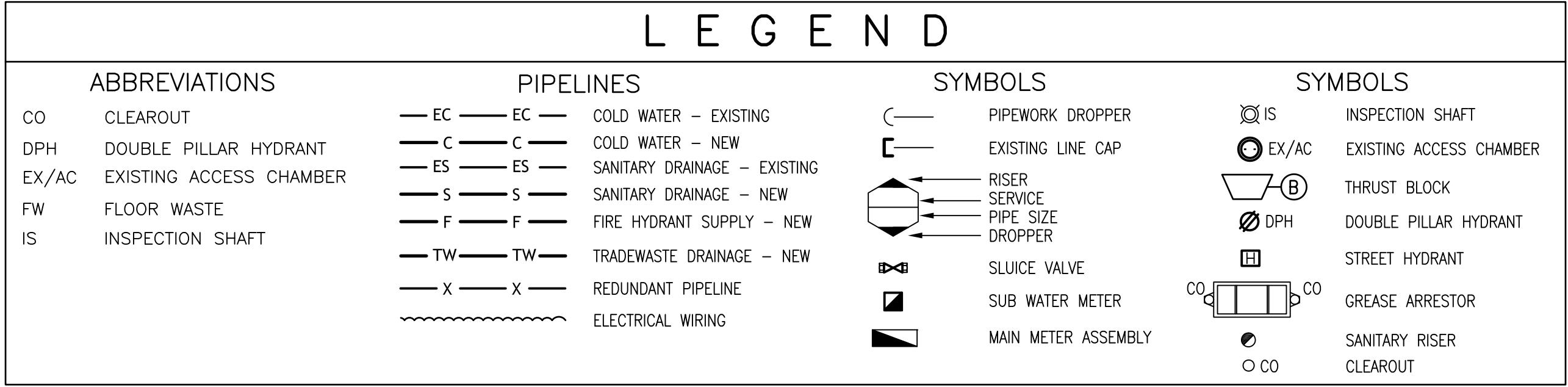


NOTE: THE ENTIRE PLUMBING INSTALLATION IS TO COMPLY WITH THE FULL REQUIREMENTS OF THE LOCAL REGULATORY AUTHORITY, A.S.3500 AND THE PLUMBING AND THE BUILDING CODES OF AUSTRALIA.

NOTE: THE PLUMBING CONTRACTOR MUST VISIT THE SITE DURING THE TENDERING PERIOD IN ORDER TO FAMILIARISE THEMSELVES WITH EXISTING SITE CONDITIONS AND MAKE THE NECESSARY ALLOWANCE FOR SUCH IN THE TENDER.

NOTE: THE TENDERER MUST READ THIS DRAWING IN CONJUNCTION WITH THE PROJECT DRAWINGS FROM THE ARCHITECT.

NOTE: THE NOMINAL SIZES OF PIPELINES NOTED ON THE DRAWINGS ARE BASED ON STANDARD COPPER PIPELINE INTERNAL BORES. IN THE EVENT OF AN ALTERNATIVE PIPELINE MATERIAL BEING ACCEPTED BY THE SUPERINTENDENT, IT IS THE PLUMBING CONTRACTORS RESPONSIBILITY TO ENSURE THAT AN EQUIVALENT INTERNAL PIPELINE BORE IS INSTALLED IN ACCORDANCE WITH APPENDIX J OF AS 3500.1.



- USE 45# BENDS IN LIEU OF 90# BENDS IN MAIN PIPELINES.
- THROUST BLOCKS ARE TO BE INSTALLED BEHIND ALL BENDS AND TEES.
- PIPEWORK INSTALLED INGROUND IS TO BE ENCASED IN CLEAN FILL SAND. LAY DETECTABLE MARKER TAPE OVER.
- ALL FLANGES NUTS AND BOLTS INSTALLED INGROUND ARE TO BE WRAPPED WITH DENSOTAPE, PLASTIC WRAPPING AND SEALED WATERTIGHT.
- ALL HYDRANTS ARE TO BE LOCATED A MINIMUM DISTANCE OF 10 METRES FROM THE BUILDING IT IS COVERING UNLESS PROTECTED BY SUITABLE FIRE RATED STRUCTURE.
- CONTRACTORS ARE TO ALLOW FOR ALL BENDS, OFFSETS, RISERS AND DROPPERS TO ALL OF THE PIPEWORK NECESSARY TO ACHIEVE A FULLY FUNCTIONING, COORDINATED COMPLIANT INSTALLATION.
- COORDINATE THE INSTALLATION OF FIRE HYDRANT AND FIRE HOSE REEL SERVICES WITH OTHER SERVICES.
- ALL INTERNAL FIRE HOSE REELS ARE TO BE LOCATED A MAXIMUM DISTANCE OF 4 METRES FROM FIRE EXITS.
- INCLUDE ALL PIPING, FITTINGS, VALVES, PUMPS, CONTROL EQUIPMENT AND OTHER ANCILLARY ITEMS OF EQUIPMENT NECESSARY FOR A FULLY FUNCTIONING, COORDINATED COMPLIANT INSTALLATION.
- FIRE HYDRANTS SHALL BE INSTALLED IN ACCORDANCE WITH AS2419 AND BE STAMPED 'APPROVED' BY THE RELEVANT AUTHORITY. HYDRANTS AND LANDING VALVES SHALL BE COMPATIBLE WITH THE NSW FIRE BRIGADE STORZ PATTERN.
- FABRICATE THE BOOSTER VALVE ASSEMBLY IN ACCORDANCE WITH AS2419 REQUIREMENTS.
- WHERE LOCATED IN AN ABOVE GROUND SITUATION, THE SERVICE SHALL BE CONSTRUCTED OF GALVANISED MILD STEEL PIPING. TYPE B COPPER OR BLUE BRUTE PN20 TO AS1432 SHALL BE USED INGROUND OR AS SPECIFIED.
- FIRE HOSE REELS SHALL BE INSTALLED IN ACCORDANCE WITH AS2441 AND COMPLY WITH AS1221.
- DO NOT INSTALL ISOLATING VALVES ON THE FIRE HOSE REEL SERVICE BETWEEN THE METER AND FIRE HOSE REELS TO ENSURE UNINTERRUPTED FLOW.
- THE MOST HYDRAULICALLY DISADVANTAGED DOUBLE PILLAR HYDRANT MUST INCORPORATE A SYSTEM PRESSURE GAUGE WITH A 65mm GLASS FACE INDICATING 0-2500KPA TO COMPLY WITH SECTION 9.3 OF AS2419.1 AND AS1349.
- PIPEWORK PASSING THROUGH CONCRETE SLABS OR PATHS SHALL BE INSTALLED WITH AN ANNUAL SPACE OF 6mm FOR THE FULL DEPTH OF SLAB PENETRATION.
- PIPEWORK PASSING THROUGH FIRE RATED WALLS, FLOORS, CEILING VOIDS AND WHERE REQUIRED IS TO BE FIRE RATED TO AS14072 OR AS SPECIFIED.
- CONCEAL ALL PIPEWORK IN WALLS, DUCTS AND CEILING VOIDS WHERE PRACTICABLE UNLESS OTHERWISE DIRECTED BY SUPERINTENDENT.
- ALL PIPELINES TO BE TESTED TO AUSTRALIAN STANDARDS REQUIREMENTS.
- THE PLUMBING CONTRACTOR IS TO DESIGN, FABRICATE AND INSTALL A NEW ENGRAVED WATERPROOF BLOCK PLAN ADJACENT THE SITE'S HYDRANT BOOSTER ASSEMBLY COMPLETE WITH 'NOTICE' OF TEST/ WORKING PRESSURES. THE BLOCK PLAN SHALL BE MINIMUM A3 SIZE AND INCORPORATE ALL NEW AND EXISTING FIRE HYDRANTS, PIPELINES/MAINS ETC. ALL IN ACCORDANCE WITH AS2419.1.

[illegible]

APPROXIMATE LOCATION OF UPPER HUNTER SHIRE COUNCIL 150mm SEWER MAIN.

APPROXIMATE LOCATION OF EXISTING MANHOLE. COUNCIL INFORMATION NOMINATES 1.4M DEEP ONLY

NEW DRAINAGE CONNECTION TO EXISTING MANHOLE SEWER STUB.

GREASE ARRESTOR FOR BUTCHER AND CAFE TENANCIES. REFER TO DETAIL ON H-04.

EXISTING SECTION OF SITE DRAINAGE TO BECOME REDUNDANT.

TWO BUILDINGS ONLY ABLE TO BE DRAINED USING A GRAVITY SEWER TO THE SITE SEWER CONNECTION.

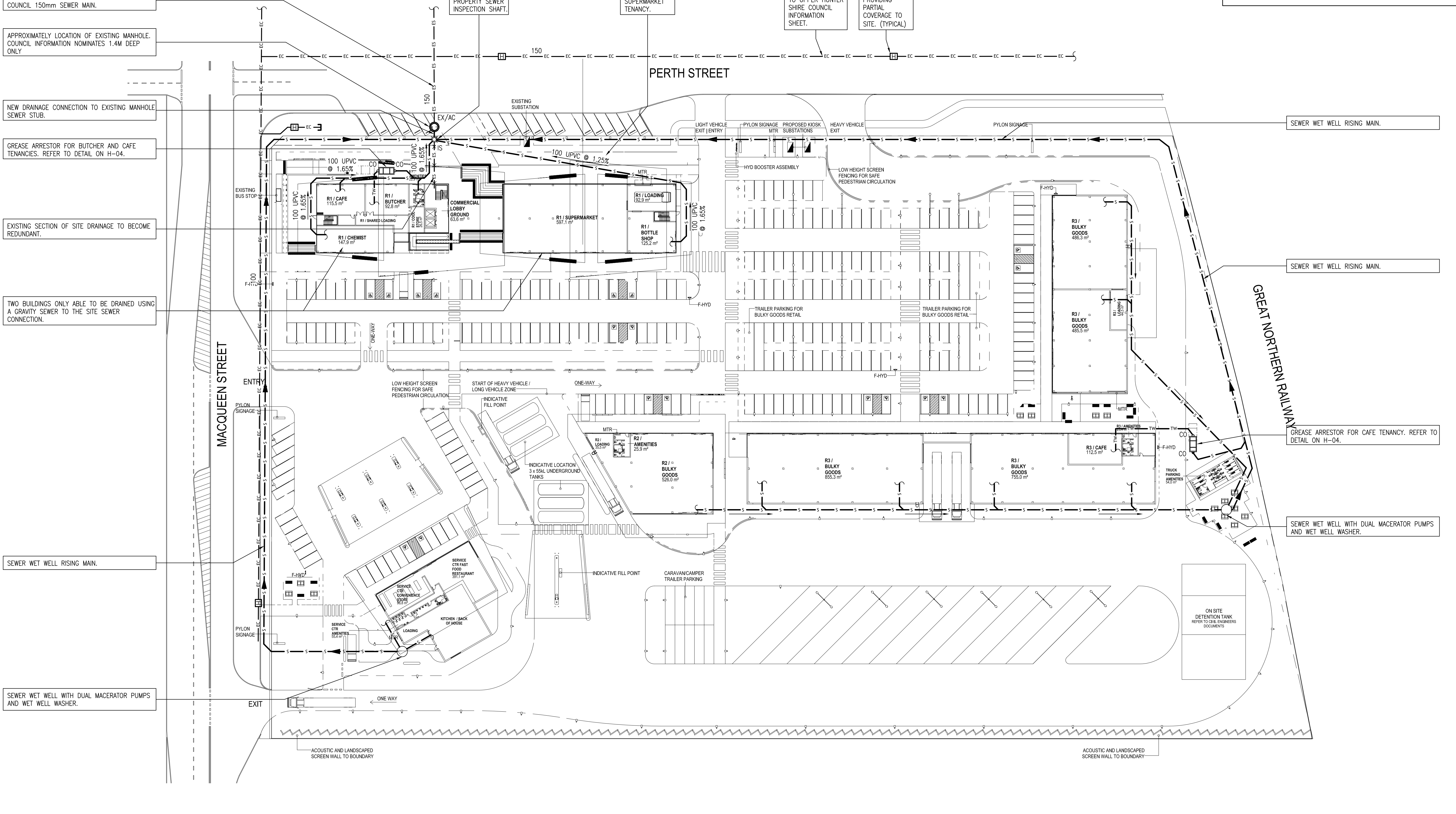
GRAVITY SEWER AND RISING MAIN CONNECTIONS TO THE NEW PROPERTY SEWER INSPECTION SHAFT.

REDUCED GRADE TO ACHIEVE GRAVITY SEWER TO SUPERMARKET TENANCY.

APPROXIMATE LOCATION OF EXISTING WATER MAIN ACCORDING TO UPPER HUNTER SHIRE COUNCIL INFORMATION SHEET.

APPROXIMATE LOCATION OF EXISTING STREET HYDRANT PROVIDING PARTIAL COVERAGE TO SITE. (TYPICAL)

NOTE: THE ENTIRE PLUMBING INSTALLATION IS TO COMPLY WITH THE FULL REQUIREMENTS OF THE LOCAL REGULATORY AUTHORITY, A.S.3500 AND THE PLUMBING AND THE BUILDING CODES OF AUSTRALIA.



SITE PLAN – SANITARY DRAINAGE

1:500 @A1

0M25M50M75M

GENERAL NOTES:

1. THE DRAWING ISSUED IS DIAGRAMMATIC. DO NOT SCALE. USE FIGURED DIMENSIONS ONLY. REFER TO ARCHITECTURAL DRAWINGS WHERE APPROPRIATE FOR EXACT LOCATION OF FIXTURES, DUCTS AND THE LIKE. THE DRAWING IS TO BE READ IN CONJUNCTION WITH ALL OTHER DOCUMENTS FORMING THE PROJECT DOCUMENTATION PACKAGE.

2. CONFIRM ALL LEVELS AND DIMENSIONS AS ACCURATE ON SITE PRIOR TO INSTALLATION. REPORT ALL DISCREPANCIES TO THE SUPERINTENDENT IMMEDIATELY.

3. THIS DRAWING HAS BEEN ISSUED IN CONFIDENCE AND REMAINS THE PROPERTY OF MCCALLUM PLUMBING & FIRE CONSULTANTS AUSTRALIA. DISTRIBUTION OR REPRODUCTION OF THE WHOLE OR PART OF THIS DRAWING WITHOUT THE EXPRESS PERMISSION OF MCCALLUM PLUMBING & FIRE CONSULTANTS AUSTRALIA IS A BREACH OF THE COMMONWEALTH COPYRIGHT ACT.

REV	DATE	AMENDMENT
3	10/12/18	REVISED DEVELOPMENT APPLICATION
2	21/06/17	DEVELOPMENT APPLICATION
1	18/05/17	PRELIMINARY

CEILING LEVEL ABOVE

FLOOR LEVEL NOTED IN TITLE

PIPEWORK LOCATION (U.N.O.)

PLUMBING & FIRE CONSULTANTS AUSTRALIA

PO Box 96 Charlestown NSW 2290

Email: mail@pfca.net.au

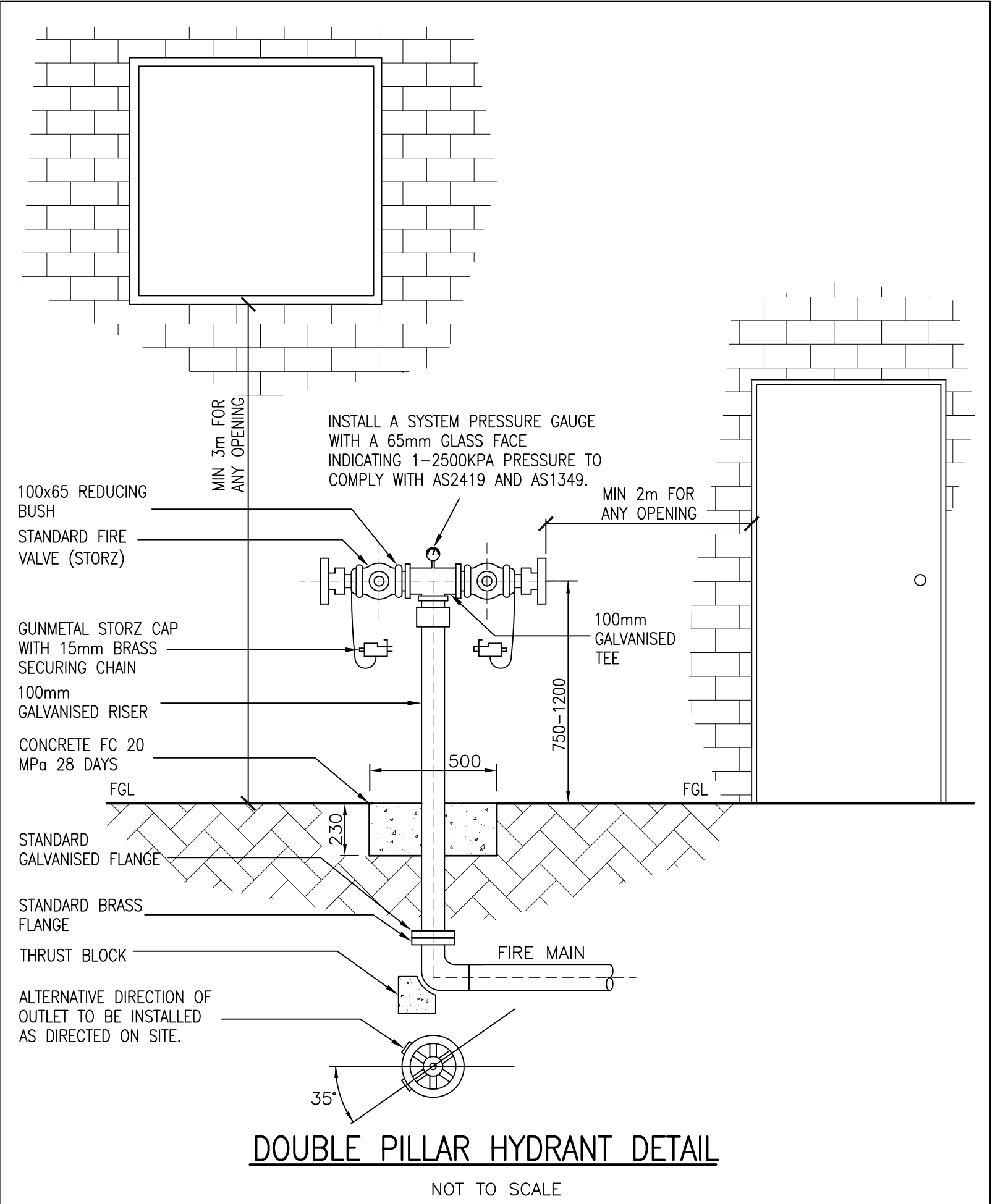
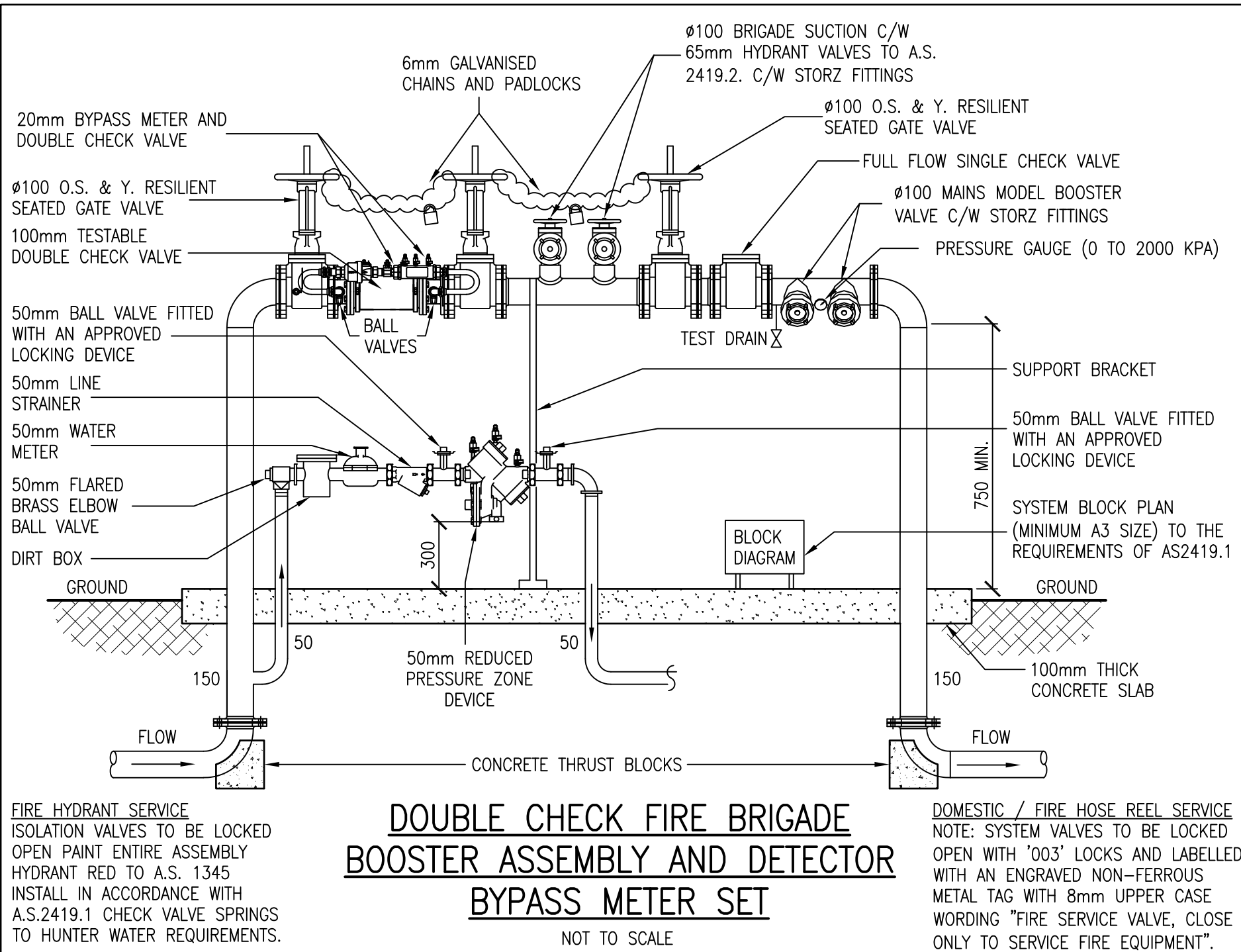
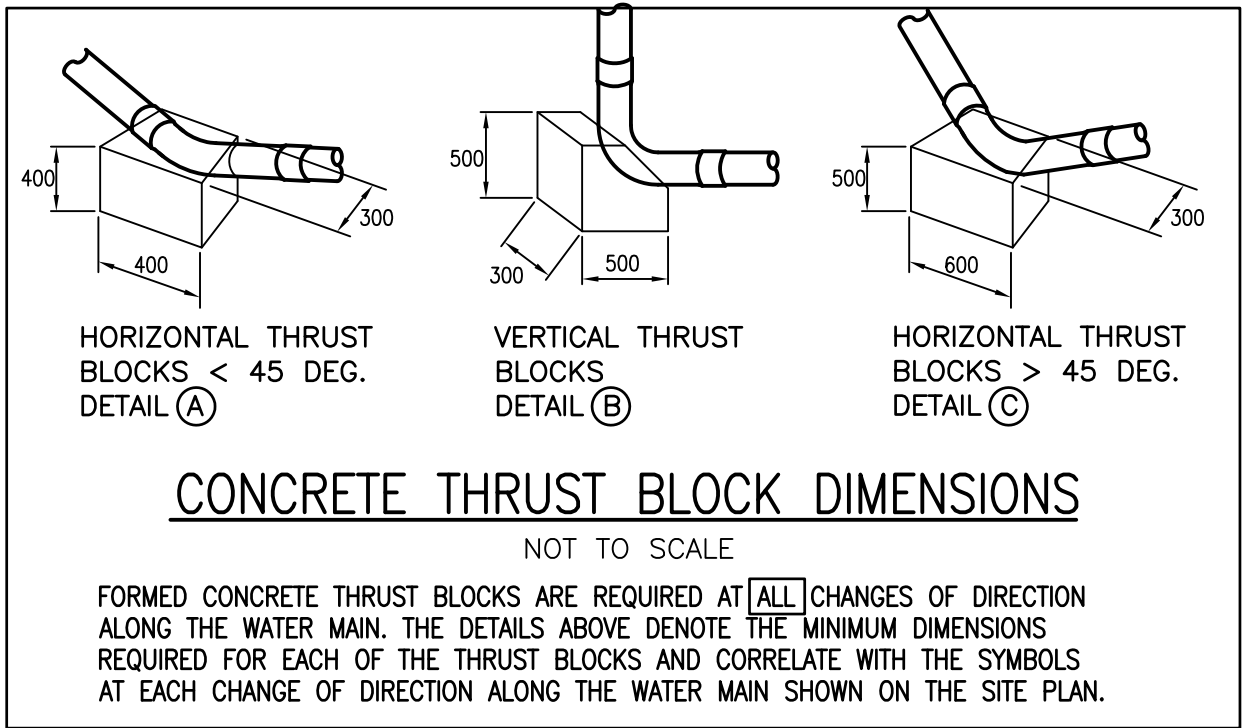
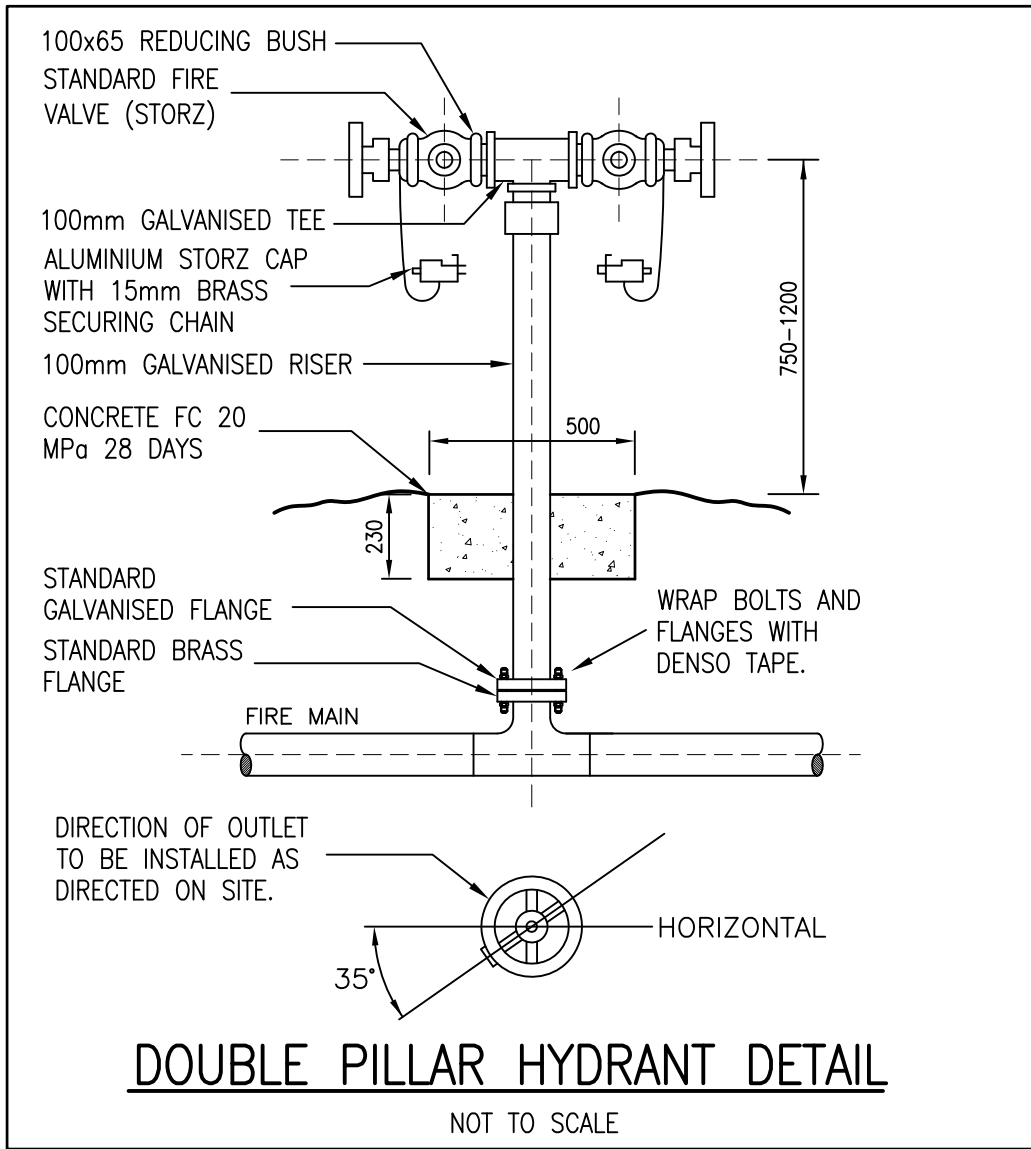
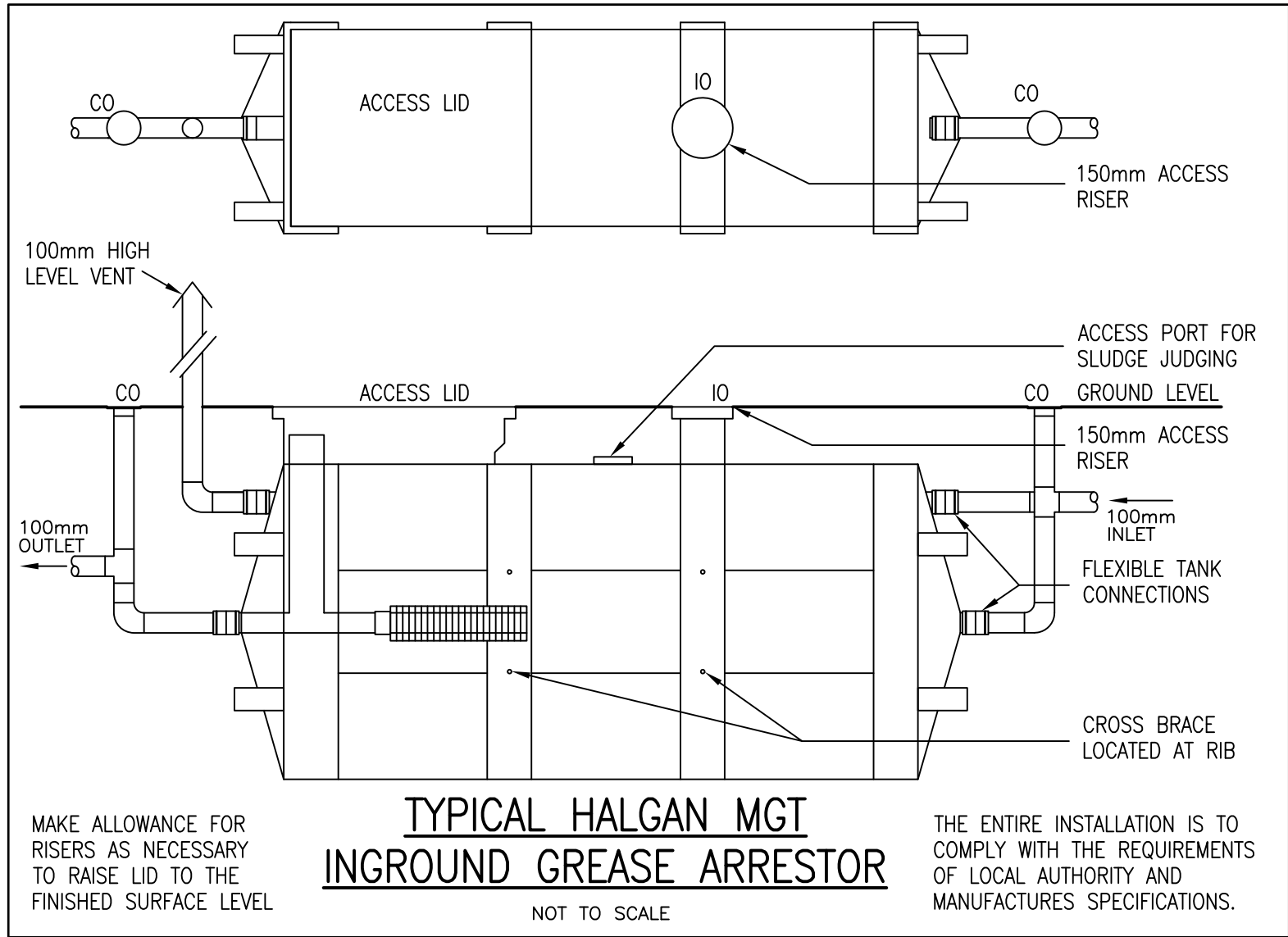
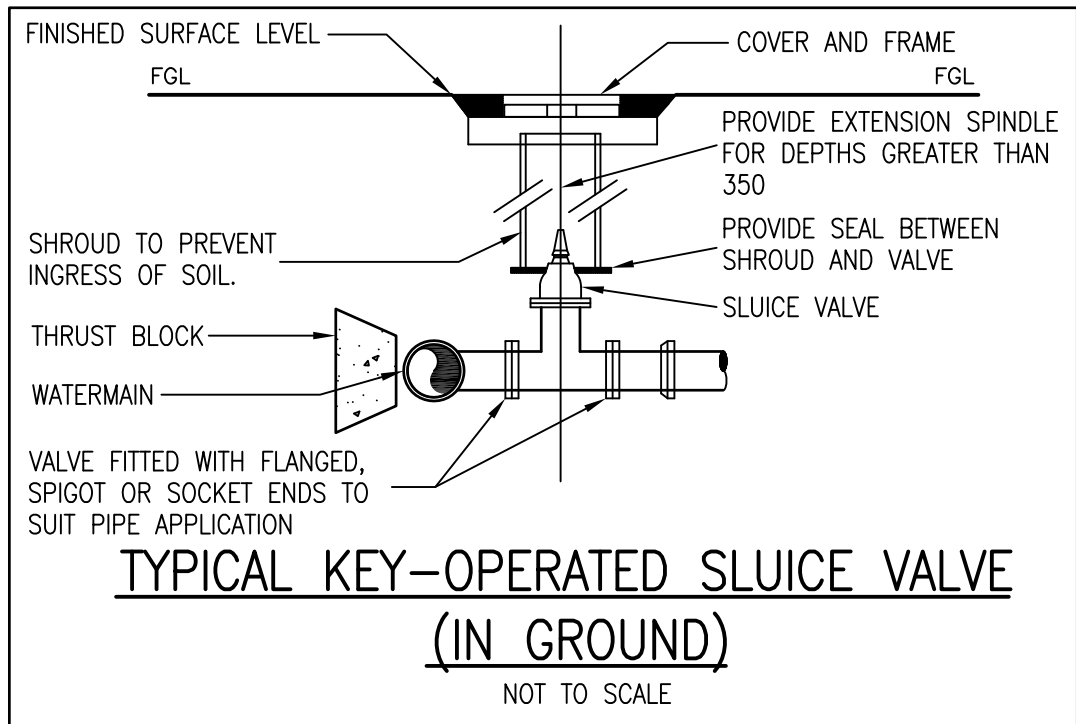
5/35 Smith Street Charlestown

ACN 098 124 620 ABN 58 098 124 620

Ph: (02)49462633

ARCHITECT:	Drawn	DEVELOPMENT APPLICATION		Size
DWP SUTERS	R.RACHHADIA	Scale	Job No.	A1
CLIENT:	THE MITCHELL GROUP	1:500	3190–317C	No. in Set 4
PROJECT:	ABERDEEN VALLEY FAIR ABERDEEN NSW 2336 SITE PLAN – SANITARY DRAINAGE	Approved	DRG. No.	Revision
		R.McCALLUM	H-03	3

NOTE: THE ENTIRE PLUMBING INSTALLATION IS TO COMPLY WITH THE FULL REQUIREMENTS OF THE LOCAL REGULATORY AUTHORITY, A.S.3500 AND THE PLUMBING AND THE BUILDING CODES OF AUSTRALIA.



GENERAL NOTES:
1. THE DRAWING ISSUED IS DIAGRAMMATIC. DO NOT SCALE. USE FIGURED DIMENSIONS ONLY. REFER TO ARCHITECTURAL DRAWINGS WHERE APPROPRIATE FOR EXACT LOCATION OF FIXTURES, DUCTS AND THE LIKE. THE DRAWING IS TO BE READ IN CONJUNCTION WITH ALL OTHER DOCUMENTS FORMING THE PROJECT DOCUMENTATION PACKAGE.
2. CONFIRM ALL LEVELS AND DIMENSIONS AS ACCURATE ON SITE PRIOR TO INSTALLATION. REPORT ALL DISCREPANCIES TO THE SUPERINTENDENT IMMEDIATELY.
3. THIS DRAWING HAS BEEN ISSUED IN CONFIDENCE AND REMAINS THE PROPERTY OF MCCALLUM PLUMBING & FIRE CONSULTANTS AUSTRALIA. DISTRIBUTION OR REPRODUCTION OF THE WHOLE OR PART OF THIS DRAWING WITHOUT THE EXPRESS PERMISSION OF MCCALLUM PLUMBING & FIRE CONSULTANTS AUSTRALIA IS A BREACH OF THE COMMONWEALTH COPYRIGHT ACT.

REV	DATE	AMENDMENT
3	10/12/18	REVISED DEVELOPMENT APPLICATION
2	21/06/17	DEVELOPMENT APPLICATION
1	18/05/17	PRELIMINARY

dwp suters

McCALLUM PFC
PLUMBING & FIRE CONSULTANTS AUSTRALIA
PO Box 96 Charlestown NSW 2290
Email: mail@pfc.net.au
5/35 Smith Street Charlestown
ACN 098 124 620 ABRN 58 098 124 620

Ph: (02)49462633

ARCHITECT: DWP SUTERS

CLIENT: THE MITCHELL GROUP

PROJECT: ABERDEEN VALLEY FAIR
ABERDEEN NSW 2336
DETAIL SHEET

Drawn
R.RACHHADIA
Design
R.McCALLUM
Approved
R.McCALLUM

DEVELOPMENT APPLICATION
Scale
N.T.S
Job No.
3190-317C
DRG. No.
H-04

Size
A1
No. in Set
4
Revision
3